



StonePeak Ceramics Trim System:

A wide variety of bullnose, cove and corner trims and mosaics tiles are available for you to complete projects for total design aesthetics. Refer to **StonePeak Ceramics Product Catalogue**

1. PRODUCT NAME

**Quartzite Collection
Data Sheet**

2. MANUFACTURER

StonePeak Ceramics, Inc.
 314 West Superior
 Chicago, IL 60610
 Telephone: 312.506.2800
 Fax: 312.335.0533
 Email: info@stonepeakceramics.com
 Website: www.stonepeakceramics.com

3. PRODUCT DESCRIPTION

Quartzite – 4 captivating colors with a high variation in shade and veining, delivering unprecedented natural looks and texture.

Recommended Applications:

Ideally suited for commercial and residential settings such as hotel lobbies, restaurants, shopping malls, airports, schools, and residential floors and walls

Finishes/Textures:

Thru-Color Finish; Rectified

Size/thickness:

- 12"x12" & (24") x 1/3" nominal *(8 mm)
- 6"x24" x 1/3" nominal *(8 mm)
- 4"x12" & (24") x 1/3" nominal *(8 mm)
- *denotes work size per ISO 10545-2*

Recommended Grout Joint: 3/32" or greater

Grout joints of 1/8" inch or less, especially with larger format tiles or running bond patterns, may require floor flatness values in excess of the 1/4" in 10' (or 1/16" in 1.0') standard required by ANSI.

For patterns with running bond/brick joint patterns StonePeak recommends a maximum of 33% offset.

4. TECHNICAL DATA

Physical Properties	ASTM Test	Industry Standards	StonePeak Results
Water Absorption	C373	Impervious < 0.5%	≤ 0.1%
Thickness Dimension	C499	Range ± 0.04 Inc. Max	≤ ± 0.04 Inch
Facial Dimension	C499	± 0.25%	≤± 0.25%
Warpage Average diagonal	C485	+/- 0.40%	≤ ± 0.40%
Warpage Average edge	C485	+/- 0.40%	≤ ± 0.40%
Wedging	C502	+/- 0.25%	≤ ± 0.25%
Bond Strength	C482	≥ 50 psi	≥ 200 psi
Breaking Strength	C648	≥250 lbf	≥ 400 lbf
Hardness (Mohs)	Scratch Test	Range 0 - 10	≥ 7
Visible Abrasion Resistance for Glazed tiles	C1027	No Requirement Range 0 - 5	Class 4
Frost Resistance	C1026	No sample must show alterations to surface	No evidence of Damage
Chemical Resistance	C650	No Requirement Range E - A	Unaffected/ Class A
Stain Resistance	C1378	No Requirement Range E - A	Class A**
DCOF	BOT 3000	≥ 0.42 *	≥ 0.60 **
Aesthetic Class/Shade Rating	Visual Evaluation Shade & Texture	No Requirement Range V0 - V4	V3

**All values given are for matte or honed material. No values are given for polished material. StonePeak does not recommend polished surfaces in areas subject to exposure from grease, oil or water.

5. INSTALLATION

Surface Preparation:

All installation work using StonePeak Ceramics tiles will conform to the standards set forth in the latest version of ANSI A108/118 and/or the TCA Handbook for Ceramic Tile installations.

All substrates should be between 40 degrees F and 90 degrees F and structurally sound, clean and free of all dirt, oil, grease, paint, concrete sealers or curing compounds as per ANSI A108.01.

Deflection:

Substrate must conform to all state and local building code requirements and ANSI A108.01 for maximum allowable substrate deflection

Movement Joints:

Movement joints shall be provided throughout the tile and work will conform to ANSI Specification A108.01-3.7; A108.02 – 4.4.and TCA Details EJ171.

Installation or setting materials:

Setting materials used will conform to the ANSI 118.4 standard or greater and be recommended by the selected manufacturer for the installation & setting materials for ceramic or porcelain tile based on the application requirements.

6. AVAILABILITY AND COST

StonePeak Quartzite Collection is available from select distributors of ceramic tile and stone.

To find accessible information of delivery and product costs for your area, please contact your nearest StonePeak Ceramics representative.

See section 2 for available phone numbers and contact information.

7. WARRANTY

StonePeak Ceramics guarantees that its products will be free of manufacturing defects and they will meet or exceed the performance specifications set forth in ANSI 137.1.

For further information and details please contact your nearest StonePeak Ceramics Distributor or StonePeak Ceramics representative for a written copy of the warranty information.

See section 2 for available phone numbers and contact information.

8. MAINTENANCE

Care and Maintenance Recommendations Guide

Please refer to **StonePeak Ceramics Care and Maintenance Recommendations Guide** for all technical information as to the care of this collection.

9. TECHNICAL SERVICES

Technical Assistance

Guide Specifications, literature, MSDS, tile samples, details and installation procedures are all available for your use or libraries.

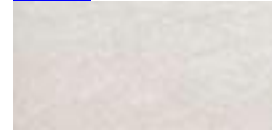
Please contact your nearest StonePeak representative for catalogues, physical samples or architectural binder.

Continued Education Programs are available – **1 or 2 hour HSW** Learning Units – contact StonePeak Ceramics' main office to set up a presentation.

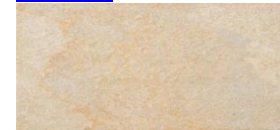
10. FILING SYSTEMS

Quartzite Collection

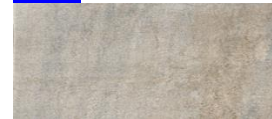
Moon



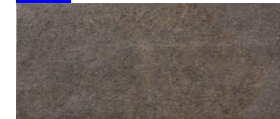
Sunset



Lime



Iron



Note to Specifier: Click on color with Internet Connection to hyperlink directly to product color data at the StonePeak Ceramics website.

11. ENVIRONMENTAL CERTIFICATIONS

StonePeak proudly contain factory and product certifications:



12. RECYCLED CONTENT

Products certified by Bureau Veritas. Please ask to see certification

Pre-Consumer Recycled Content

Post-Consumer Recycled Content