



**STONEPEAK**



StonePeak Ceramics, Inc.  
Corporate Headquarters  
325 W. Huron St., Suite 404  
Chicago, Illinois 60654  
(312) 506-2800  
[info@stonepeakceramics.com](mailto:info@stonepeakceramics.com)  
[stonepeakceramics.com](http://stonepeakceramics.com)

Sample Express  
1-866-STPEAK1  
1-866-787-3251

Production Facility  
238 Porcelain Tile Drive  
Crossville, Tennessee 38555

**STONEPEAK**

**COLLECTION BOOK**



**Solumbria**



**STONEPEAK**

**Index**

2-3	The Company
4-5	Sustainability
6-7	The collection
8-19	Image Gallery
20-24	Technical information



## The Company

For over two decades, Stonepeak has been a trailblazer in the porcelain industry, embodying innovation, sustainability, and unwavering excellence. Our journey began nestled in the hills of Tennessee's Smoky Mountains, where we made it our goal to produce the highest quality, most eco-friendly product on the market.

At Stonepeak, we thrive on pushing boundaries, introducing groundbreaking technology and advancements that elevate our products beyond the ordinary. From cutting-edge designs to sustainable manufacturing practices, innovation is woven into our corporate DNA.

As stewards of the environment, we take immense pride in our commitment to sustainability. Our meticulously crafted high-quality porcelain surfaces aren't merely beautiful; they are also environmentally responsible. We believe in leaving a positive legacy on the planet for generations to come.

While our roots remain firmly planted in Crossville, TN, our influence extends far beyond. Stonepeak serves clients across the nation, gracing homes, commercial spaces and architectural marvels with our exceptional products.

Not long ago, we envisioned a company that would seamlessly unite the finest products with a genuine focus on people. Today, that vision is our reality—a refreshing transformation in the ceramics industry where our commitment to you remains unwavering.

# Sustainability

As the U.S. operation of the renowned Iris Ceramica Group, Stonepeak is deeply rooted in a legacy of sustainability. Our journey begins with the visionary founder, Romano Minozzi, who coined the term “Economy = Ecology” in the 1960s. This powerful concept encapsulates his vision of an economy that serves both humanity and the environment we inhabit.

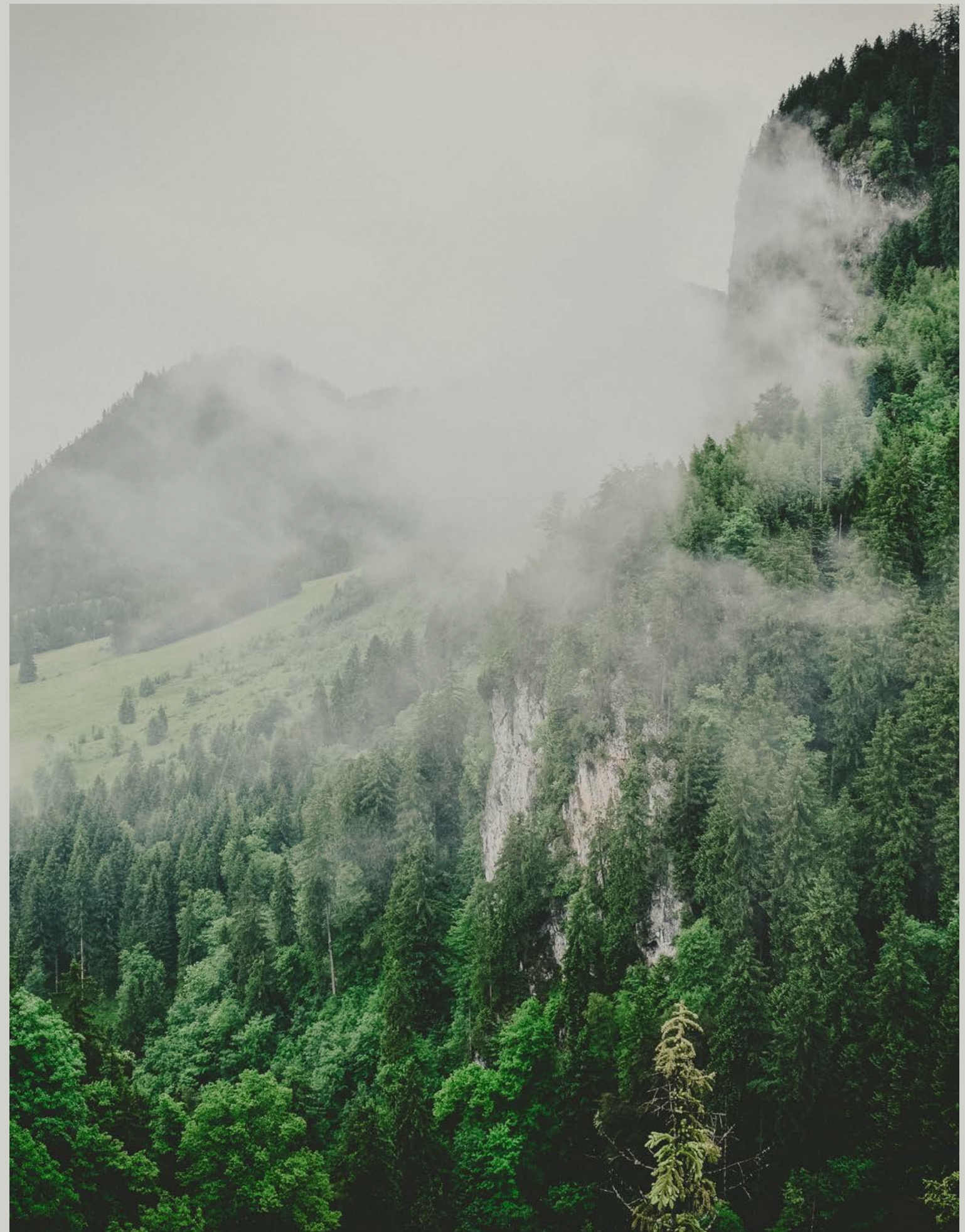
Inheriting this profound philosophy, Stonepeak has always had sustainability woven into its DNA. Our commitment extends beyond mere words; it is reflected in every aspect of our business.

Stonepeak continuously works to create a higher environmental standard, striving to lower its carbon footprint and provide customers with the most ecofriendly porcelain product on the market.

To reduce energy, water, and waste, Stonepeak introduced an innovative formula that utilizes mostly raw materials found in the U.S., with a vast majority being sourced within 250 miles from our manufacturing plant in Crossville, TN. This produces a greener generation of products that is American made.

Our state-of-the-art manufacturing facility also operates with sustainability at its core. Key practices include a nearly closed-loop process, where raw materials and water waste are efficiently recycled back into production. Additionally, our facilities exceed legal requirements, incorporating antipollution devices such as smoke and sand depurators, water purifiers, and reutilization of heat from kilns and production losses. The plant also utilizes eco-conscious packaging and has received accolades from rigorous certifications such as DECLARE, ISO 9001, LEED, EPD, GREEN GOLD, and GREEN SQUARED.

At StonePeak, our commitment to the environment resonates through every solution we create. We firmly believe that sustainable practices not only benefit our planet but also enrich the lives of those who choose our products.



## The collection

Inspired by the sun-kissed landscapes of Italy, the Solumbria collection celebrates the rich tradition of travertine crosscut stone. Crafted with meticulous artistry, these porcelain solutions evoke the warmth and beauty of sunlit terraces, ancient Roman architecture, and the essence of La Dolce Vita.

The name Solumbria pays homage to its origins, derived from the Latin word “Sol” meaning sun and “Umbria,” an Italian region where travertine crosscut can be found. This is the common thread of the collection; gazing into the heart of authentic travertine through a 90-degree angle.

As in nature, a captivating feature unfolds: a boundless diversity and unparalleled arrangement of exquisitely hued faces, each meticulously crafted in a symphony of diverse tones.

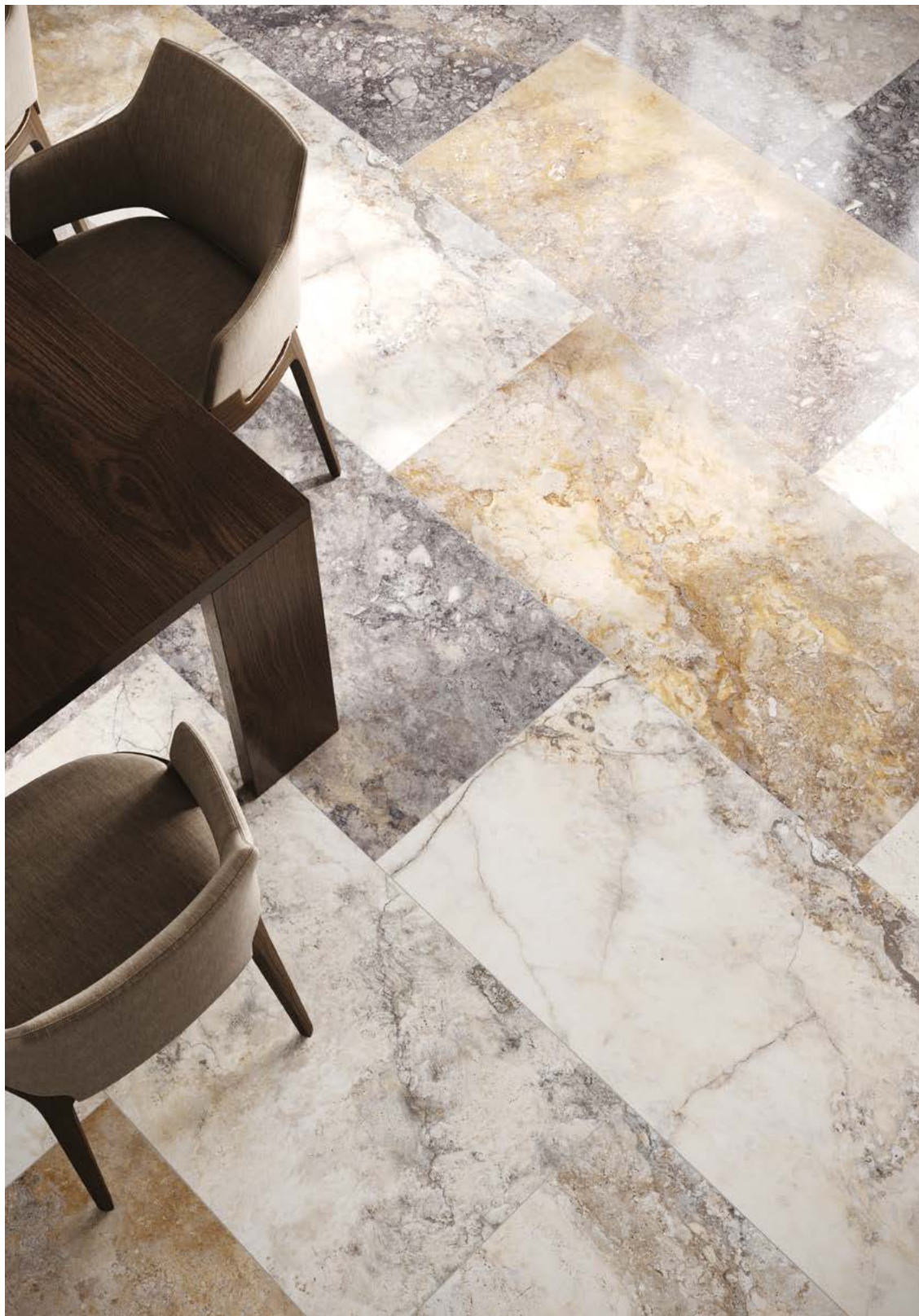
Each visage is a masterpiece telling stories of time, resilience, and the passage of civilizations—a visual narrative etched into every surface.

The collection includes three sizes 12x24, 24x24 and 24x48, and offers two new finishes: the innovative Honed+ which combines exceptionally high slip resistance with a non-reflective look, and Natural Gloss, a breathtaking natural surface enriched by strategically positioned glossy highlights, striking the surface and accentuating the veining.

Solumbria is bound to create unique environments, infusing every space with a distinctive essence.







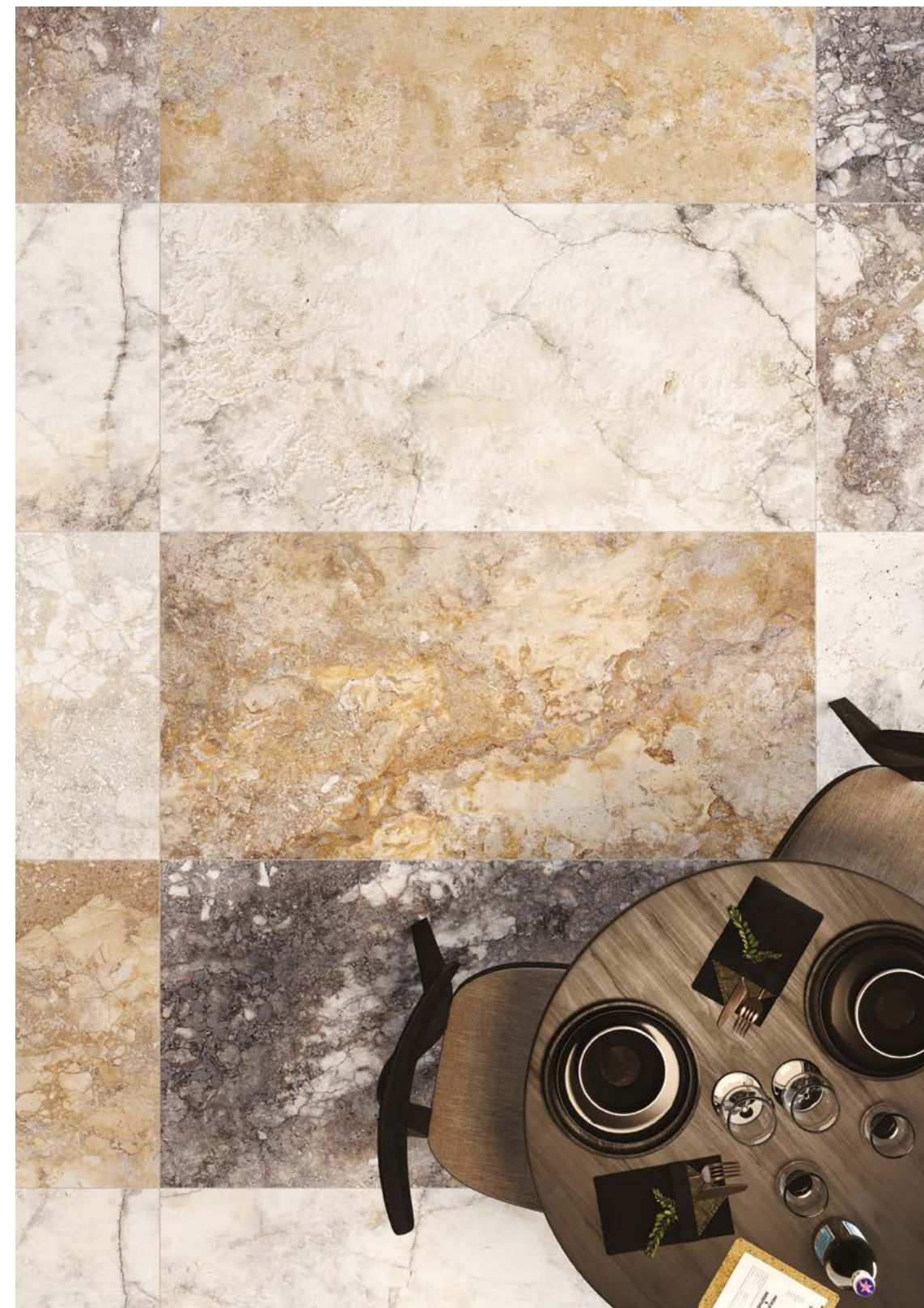
Wall Solumbria Multicolor Natural Gloss 12"x24"  
Floor Solumbria Multicolor Natural Gloss 24"x48"







ESPRESSO ————— €4,00  
AMERICANO ————— €3,50  
CAPPUCCINO ————— €4,20  
LATTE ————— €3,80  
FLAT WHITE ————— €4,00  
HOT CHOCOLATE ————— €4,20  
TEA ————— €3,50



Wall Solubria Multicolor Natural Gloss 12"x24"  
 Floor Solubria Multicolor Honed+ 24"x48"





Wall Solumbria Multicolor Natural Gloss 12"x24"  
Floor Solumbria Multicolor Honed+ 24"x24"



## **Technical info**

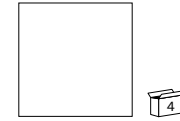
# Multicolor



Technical Ceramics  $\frac{1}{8}$  0,32"/8mm



**24"x48" SQ.**  
Multicolor  
USG2448323 Honed+  
USNG2448323 Natural Gloss



**24"x24" SQ.**  
Multicolor  
USG2424323 Honed+  
USNG2424323 Natural Gloss



**12"x24" SQ.**  
Multicolor  
USG1224323 Honed+  
USNG1224323 Natural Gloss



**MOSAIC 3"x3" HEXAGON**  
12"x12" sheet  
Multicolor  
USNG12MH323 Natural Gloss



**BULLNOSE 4"x24"**  
Multicolor  
USG424BT323 Honed+  
USNG424BT323 Natural Gloss



This collection showcases an exceptional feature—an extensive array of tile faces, with 25+ faces sized 24x48" and an impressive 100+ faces sized 12x24", ensuring unparalleled versatility, limitless design possibilities, and minimal face repetition for a truly unique aesthetic.

All sizes are nominal  
For technical information refer to our website [stonepeakceramics.com](http://stonepeakceramics.com)



For technical information,  
visit our website and follow us on social media