



MADE IN THE USA

# STONECRETE COLLECTION

STONEPEAK  
high tech porcelain



# STONECRETE

THRU-COLOR PORCELAIN

SABLED CEMENT



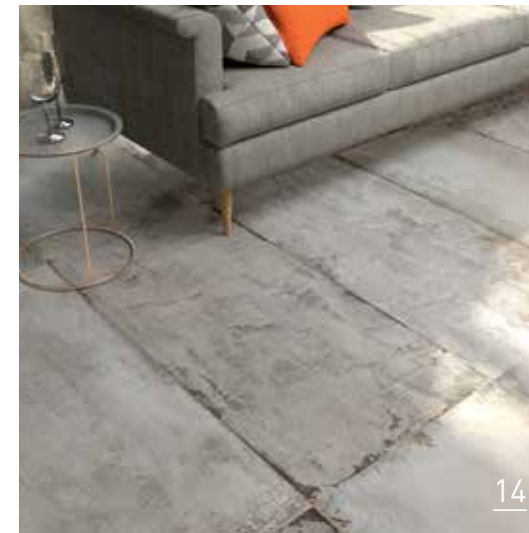
4

SMOKED CEMENT



8

SANDED CEMENT



14



16

SMOLDERED CEMENT

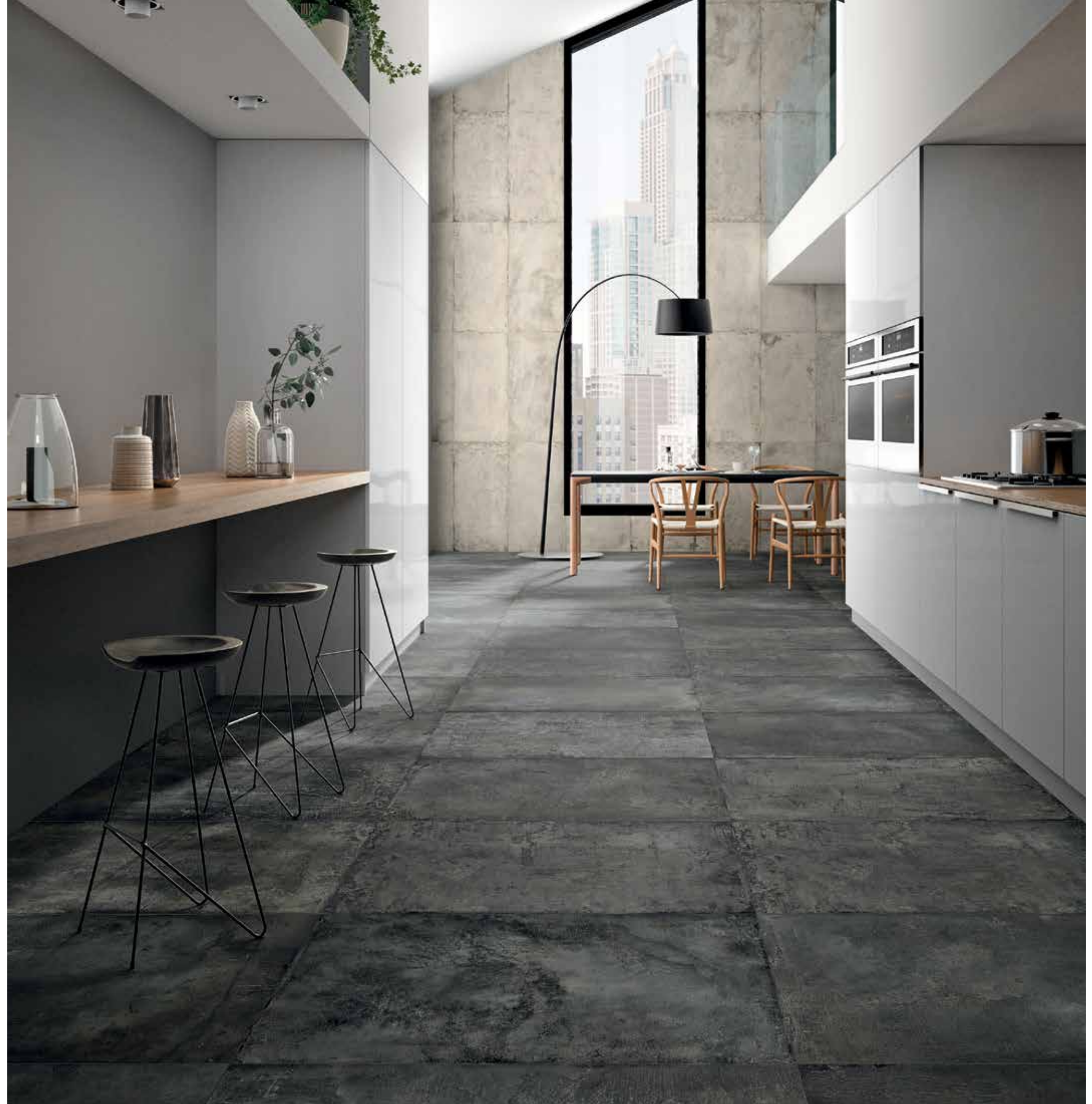


20

SALTED CEMENT

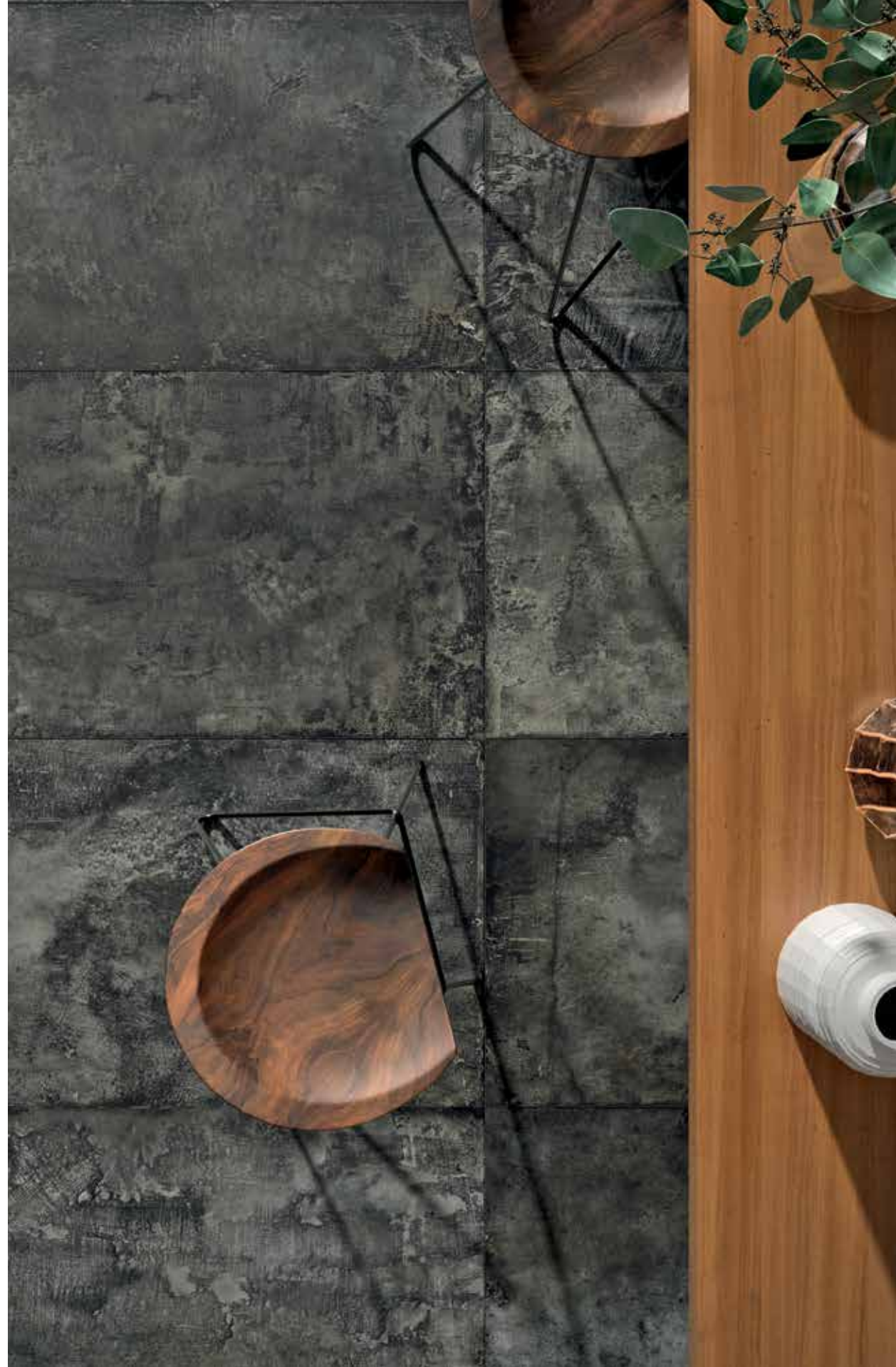
SABLED CEMENT

ELEGANT COMBINATIONS  
OF **MATERIALS** & **COLORS**



STONECRETE Sabled Cement 24" x 48" / Smoked Cement 12" x 24"







# SMOKED CEMENT



STONECRETE Smoked Cement 24" x 48"

## VISUAL **ATTRACTION**



STONECRETE Smoked Cement 24" x 48" / Sabled Cement 24" x 48"









STONECRETE Smoked Cement 24" x 24"





SANDED CEMENT

---

**EMPHASIZE** THE MOOD  
OF **THE SPACE**

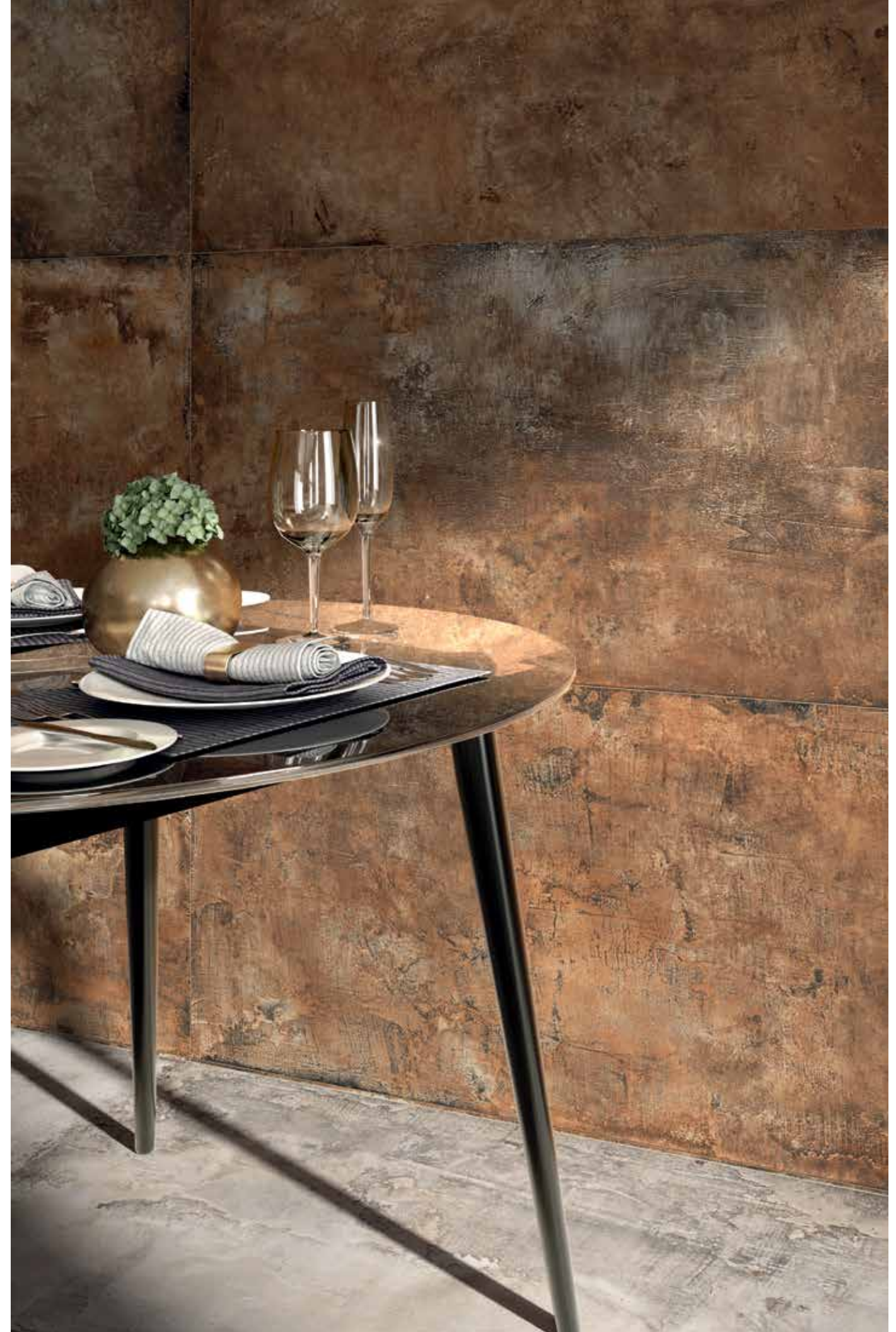


**SOPHISTICATED**  
CEMENT TEXTURES

**SMOLDERED CEMENT**



STONECRETE Smoldered Cement 24" x 48" / Sanded Cement 24" x 48"



STONECRETE Smoldered Cement 24" x 48" / Sanded Cement 24" x 48"





STONECRETE Smoldered Cement 24" x 48" / Sanded Cement 24" x 48"



**FLEXIBLE DESIGN**  
FOR **DAILY LIFE**

SALTED CEMENT



STONECRETE Salted Cement 12" x 24"





# STONECRETE

## SALTED CEMENT

### Sizes



4

**24" x 48"**  
 USG2448208 SALTED CEMENT sq. honed  
 USSP2448208 SALTED CEMENT sq. lappato



4

**24" x 24"**  
 USG2424208 SALTED CEMENT  
 sq. honed  
 USSP2424208 SALTED CEMENT  
 sq. lappato



8

**12" x 24"**  
 USG1224208 SALTED CEMENT  
 sq. honed  
 USSP1224208 SALTED CEMENT  
 sq. lappato

### Mosaics



4

**DESIGN 6 MOSAIC**  
**12" x 24"**  
 USG124D6208 SALTED CEMENT



5

**PARQUET MOSAIC**  
**3" x 6" (12" x 12" sheet)**  
 USG12MP208 SALTED CEMENT

### Trim System



16

**3" x 24" BULLNOSE**  
 USG324BT208 SALTED CEMENT BT



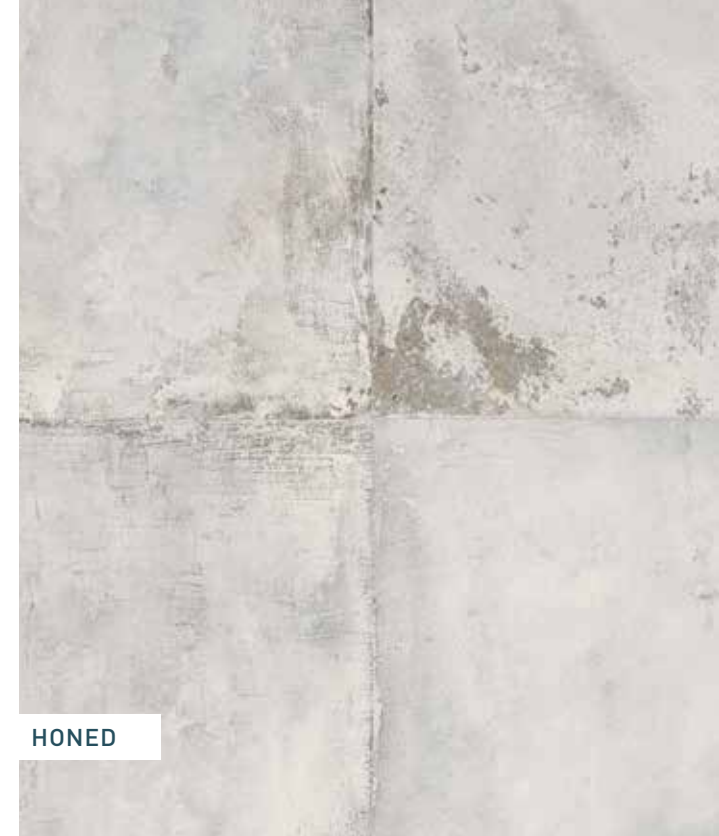
8

**6" x 12" COVE BASE**  
 USG612C208 SALTED CEMENT CB



5

**CUBE 3D MOSAIC**  
**1.5" x 1.5" (12" x 12" sheet)**  
 USG12MC3208 SALTED CEMENT



HONED



LAPPATO



All sizes are nominal  
 All Stonecrete products are rectified  
 Mosaics are mesh-mounted  
 For technical information refer to our website [www.stonepeakceramics.com](http://www.stonepeakceramics.com)



# STONECRETE

## SMOKED CEMENT

### Sizes



**24" x 48"**  
USG2448210 SMOKED CEMENT sq. honed  
USSP2448210 SMOKED CEMENT sq. lappato



**24" x 24"**  
USG2424210 SMOKED CEMENT  
sq. honed  
USSP2424210 SMOKED CEMENT  
sq. lappato



**12" x 24"**  
USG1224210 SMOKED CEMENT  
sq. honed  
USSP1224210 SMOKED CEMENT  
sq. lappato

### Mosaics



**DESIGN 6 MOSAIC**  
**12" x 24"**  
USG124D6210 SMOKED CEMENT



**PARQUET MOSAIC**  
**3" x 6" (12" x 12" sheet)**  
USG12MP210 SMOKED CEMENT

### Trim System



**3" x 24" BULLNOSE**  
USG324BT210 SMOKED CEMENT BT



**6" x 12" COVE BASE**  
USG612C210 SMOKED CEMENT CB



**CUBE 3D MOSAIC**  
**1.5" x 1.5" (12" x 12" sheet)**  
USG12MC3210 SMOKED CEMENT

# SANDED CEMENT

### Sizes



**24" x 48"**  
USG2448209 SANDED CEMENT sq. honed  
USSP2448209 SANDED CEMENT sq. lappato



**24" x 24"**  
USG2424209 SANDED CEMENT  
sq. honed  
USSP2424209 SANDED CEMENT  
sq. lappato



**12" x 24"**  
USG1224209 SANDED CEMENT  
sq. honed  
USSP1224209 SANDED CEMENT  
sq. lappato

### Mosaics



**DESIGN 6 MOSAIC**  
**12" x 24"**  
USG124D6209 SANDED CEMENT



**PARQUET MOSAIC**  
**3" x 6" (12" x 12" sheet)**  
USG12MP209 SANDED CEMENT

### Trim System



**3" x 24" BULLNOSE**  
USG324BT209 SANDED CEMENT BT



**6" x 12" COVE BASE**  
USG612C209 SANDED CEMENT CB



**CUBE 3D MOSAIC**  
**1.5" x 1.5" (12" x 12" sheet)**  
USG12MC3209 SANDED CEMENT

HONED

HONED

LAPPATO

LAPPATO



All sizes are nominal  
All Stonecrete products are rectified  
Mosaics are mesh-mounted  
For technical information refer to our website [www.stonepeakceramics.com](http://www.stonepeakceramics.com)



All sizes are nominal  
All Stonecrete products are rectified  
Mosaics are mesh-mounted  
For technical information refer to our website [www.stonepeakceramics.com](http://www.stonepeakceramics.com)



# STONECRETE

## SMOLDERED CEMENT

### Sizes



**24" x 48"**  
USG2448211 SMOLDERED CEMENT sq. honed  
USSP2448211 SMOLDERED CEMENT sq. lappato



**24" x 24"**  
USG2424211 SMOLDERED CEMENT  
sq. honed  
USSP2424211 SMOLDERED CEMENT  
sq. lappato



**12" x 24"**  
USG1224211 SMOLDERED CEMENT  
sq. honed  
USSP1224211 SMOLDERED CEMENT  
sq. lappato

### Mosaics



**DESIGN 6 MOSAIC**  
**12" x 24"**  
USG124D6211 SMOLDERED CEMENT

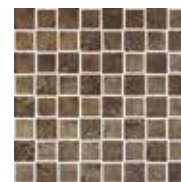


**PARQUET MOSAIC**  
**3" x 6" (12" x 12" sheet)**  
USG12MP211 SMOLDERED CEMENT

### Trim System



**3" x 24" BULLNOSE**  
USG324BT11 SMOLDERED CEMENT BT



**CUBE 3D MOSAIC**  
**1.5" x 1.5" (12" x 12" sheet)**  
USG12MC3211 SMOLDERED CEMENT



**6" x 12" COVE BASE**  
USG612C211 SMOLDERED CEMENT CB

# SABLED CEMENT

### Sizes



**24" x 48"**  
USG2448207 SABLED CEMENT sq. honed  
USSP2448207 SABLED CEMENT sq. lappato



**24" x 24"**  
USG2424207 SABLED CEMENT  
sq. honed  
USSP2424207 SABLED CEMENT  
sq. lappato



**12" x 24"**  
USG1224207 SABLED CEMENT  
sq. honed  
USSP1224207 SABLED CEMENT  
sq. lappato

### Mosaics



**DESIGN 6 MOSAIC**  
**12" x 24"**  
USG124D6207 SABLED CEMENT

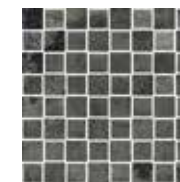


**PARQUET MOSAIC**  
**3" x 6" (12" x 12" sheet)**  
USG12MP207 SABLED CEMENT

### Trim System



**3" x 24" BULLNOSE**  
USG324BT207 SABLED CEMENT BT



**CUBE 3D MOSAIC**  
**1.5" x 1.5" (12" x 12" sheet)**  
USG12MC3207 SABLED CEMENT



**6" x 12" COVE BASE**  
USG612C207 SABLED CEMENT CB

HONED

LAPPATO

HONED

LAPPATO



DCOF AVERAGE  
LAPPATO:  $\geq 0.42^*$   
DCOF AVERAGE  
HONED:  $\geq 0.55^*$

All sizes are nominal  
All Stonecrete products are rectified  
Mosaics are mesh-mounted  
For technical information refer to our website [www.stonepeakceramics.com](http://www.stonepeakceramics.com)



DCOF AVERAGE  
LAPPATO:  $\geq 0.42^*$   
DCOF AVERAGE  
HONED:  $\geq 0.55^*$

All sizes are nominal  
All Stonecrete products are rectified  
Mosaics are mesh-mounted  
For technical information refer to our website [www.stonepeakceramics.com](http://www.stonepeakceramics.com)



# STONECRETE GENERAL TECHNICAL SPECIFICATIONS



PHYSICAL PROPERTIES	ASTM TEST	INDUSTRY STANDARDS	STONEPEAK RESULTS
Water Absorption	C373	Impervious < 0.5%	≤ 0.1%
Thickness Dimension	C499	Range ± 0.04 Inc. Max	≤ ± 0.04 Inc.
Facial Dimension	C499	± 0.25%	≤ ± 0.25%
Warpage Average Diagonal	C485	± 0.40%	≤ ± 0.40%
Warpage Average Edge	C485	± 0.40%	≤ ± 0.40%
Wedging Average	C502	± 0.25%	≤ ± 0.25%
Bond Strength	C482	≥ 50 psi	≥ 200 psi
Breaking Strength	C648	≥ 250 lbf	≥ 400 lbf
Hardness (Mohs)	Scratch Test (Not regulated)	Range 0 -10	≥ 7
Visual Abrasions Resistance for Glaze Tiles	C1027	No Requirement Range 0 – 5	Class 4
Frost Resistance	C1026	No samples must show alterations to surface	No Evidence of Damage
Chemical Resistance	C650	No Requirement Range E – A	Class A
Stain Resistance	C1378	No Requirement Range E – A	Class A
DCOF Honed Finish	BOT 3000	≥ 0.42	≥ 0.55
DCOF Lappato Finish (semi-polished)	BOT 3000	≥ 0.42	≥ 0.42
Aesthetic Class/Shade Rating	Visual Evaluation Shade & Texture	No Requirement Range V0 – V4	V3

- Actual test data are available upon request.
- Please ask for individual test reports, as results vary depending on finish.
- Specific technical information is available on our website: [www.stonepeakceramics.com](http://www.stonepeakceramics.com)
- StonePeak collections are materials subject to variations in color and/or vein, as they are created using natural products.
- DCOF: all values given are for matte or honed material. No values are given for “polished” materials. StonePeak does not recommend polished surfaces in areas subject to exposure from grease, oil, or water.
- Water (especially standing water), oil, grease, etc., create slippery conditions. Floor applications with exposure to these elements require extra maintenance and caution in product selection.
- TCNA Handbook for Ceramic Tile Installation

## CARE & MAINTENANCE

### INITIAL CLEANING DURING INSTALLATION

As with any flooring material, the most important step in the care and maintenance of your porcelain floor is the initial cleaning.

The single most important step in caring for your StonePeak Ceramics’ floor is the complete removal of setting material, grout residue, and/or any construction residue from the surface of the tiles before they have a chance to dry. In most cases, StonePeak Ceramics’ porcelain tiles can be cleaned successfully by scrubbing the installation with a “neutral detergent cleaner” followed by a thorough rinsing.

If a grout residue still remains, rinse further, cleaning the tile several times with clean water, to be certain you have removed traces of grout residue from the surface of the tiles.

Grout manufacturers have printed detailed instructions for the proper cleaning of grout residues available. The grout manufacturer’s directions should be followed if a grout film is present on the surface of the porcelain tiles.

Once the initial cleaning process has been completed, StonePeak Ceramics’ porcelain tiles just need to be swept or vacuumed and damp mopped with a “neutral detergent cleaner” followed by a thorough rinsing.

### SPECIAL GROUTING PRECAUTIONS

It is recommended that a test patch be done prior to grouting the installation to determine if contaminations of grout pigment will occur on the tile — especially when using light colored tiles or polished tiles that are to be grouted with a dark contrasting colored grout, or when dark colored tiles are to be grouted with a light colored grout. If discoloration does not occur on the surface of the tile, then proceed with grouting. If discoloration does occur, it is recommended to request from the grout manufacturer a proper procedure for the protection of this surface.

### PROPER CARE DURING CONSTRUCTION PHASE

Like any other finished material, StonePeak Ceramics’ porcelain tiles are viewed as a finish flooring material. We strongly recommend that a protective cover such as cardboard, construction paper, plywood, and/or other covering which will protect the porcelain tile during the initial construction phase be used. The use of plastic as a cover is not recommended, since plastic becomes slippery when construction residue comes in contact with the plastic. In addition, plastic has a tendency to delay the natural curing process of the thin-set and/or grout.

### GLAZED, MATTE, HONED & TEXTURED TILES

StonePeak Ceramics’ porcelain tile products do not require the use of sealers, surface coating or waxes on the Glazed, Matte, Honed and Textured porcelain tiles. In fact, the surface of the matte series is so smooth, and non-absorbing, that Stain Test results show that StonePeak Ceramics’ porcelain tiles are virtually stain resistant. Applying a sealer or surface coating to matte finish porcelain tiles will only add unnecessary steps to the overall maintenance program — without enhancing the overall appearance of the tile. The use of sealers on impervious porcelain paver tiles will turn a low-maintenance tile into labor intensive high-maintenance tile, and in most cases, these applied surface sealers on matte porcelain tiles change and/or diminish the slip resistance of the porcelain tile.

### POLISHED TILES

In the event a polished finish is used in an area prone to excessive spills or dirt, it may be advisable to treat the tile with a penetrating-type sealer.

During the polishing process, microscopic pores are sometimes exposed. Although the pores are shallow, spills can fill them making standard cleaning procedures inadequate. By using a penetrating-type sealer, these microscopic pores are filled preventing stains from setting in. A penetrating-type sealer is designed only to fill pores, not to coat the tile surface.

You will not alter the polished tile’s appearance, provided a recommended sealer is used and applied according to manufacturer’s instructions.





## RECOMMENDATIONS GUIDE

### DAILY MAINTENANCE

As with any flooring material, general maintenance and cleaning varies depending on the surface, texture of the tile and surface contaminate. Generally, neutral cleaners are more than sufficient to clean and maintain StonePeak Ceramics' porcelain tiles. It's important that the cleaner used is a non-oil, non-soap, and non-animal fat based product. These cleaners have a tendency to act like a magnet and attract dirt and dust, due to the residue build-up left behind during the clean up. Generally water and a soft sponge will remove most contaminants from your porcelain tile. If a cleaning product other than water is used for general cleaning only a neutral Ph cleaner (with the characteristics described above) should be used. These neutral Ph cleaners are available from most sealer manufacturers and can be found at a local hardware store or tile distributor. Cleaners such as Formula 409, Fantastic, or Windex can sometimes be used on unsealed tiles, but most are alkaline in nature and could attack the surface finish. If using a cleaner such as this always test a small area first. If you are not able to remedy the situation using the materials above refer to the Heavy Duty Maintenance section of the Recommendations Guide.

### HEAVY DUTY MAINTENANCE

If contaminants occur due to more than daily routine activities, then the use of a stronger cleaner may be needed. Use caution in selecting the product for heavy duty cleaning as many chemicals can damage items of the installation or near the installation as well as discolor and/or stain certain types of tiles. Porcelain tiles are the most durable tiles available, however, we do not test every chemical made, and therefore a test area is needed to confirm that the product selected is suitable for the removal of the contaminant in question. Please refer to the Stain Removal Guide for information about particular stains and manufacturer information. The information listed is only a guide. For more specific information please contact one of the manufacturers listed. Always follow the directions from the manufacturer of the cleaning product you intend to use.

---

– StonePeak highly recommends the use of low voc, non-hazardous, and non-polluting products for the cleaning and maintenance of tile and grout products.

– Acid washing is rarely recommended. Acid or acid based cleaners should not be used to clean a grout residue. Some acids can burn non-epoxy or cementitious grouts and leave a white film that is almost impossible to remove. Also, the use of certain acid solutions can structurally weaken the grout in the joint of the tile. If in the event a mild solution of sulfamic or phosphoric acid base cleaner is needed, carefully read the manufacturer's instructions.







**StonePeak Ceramics, Inc.**  
**Corporate Headquarters**  
314 West Superior Street  
Chicago, Illinois 60654  
**t** (312) 506-2800  
**f** (312) 335-0533  
**e** [info@stonepeakceramics.com](mailto:info@stonepeakceramics.com)  
**w** [www.stonepeakceramics.com](http://www.stonepeakceramics.com)

**Sample Express**  
1-866-STPEAK1  
1-866-787-3251

**Production Facility**  
238 Porcelain Tile Drive  
Crossville, Tennessee 38555

