

STONEPEAK

high tech porcelain



MARBLE

StonePeak's Marble features all the unique coloration of quarried marble with minimal veining. Available in both polished and honed finishes, every piece of this thru-body porcelain series has subtle variations, making each slab unique. This line is perfectly suited for commercial and residential applications and is completed by mosaics, accents and trims.

StonePeak Ceramics, Inc. Production Facility 238
Corporate Headquarters Porcelain Tile Dr
314 W. Superior St. Crossville, TN 38555
Chicago, IL 60654
www.stonepeakceramics.com
info@stonepeakceramics.com

SAMPLE XPRESS
866-STPEAK1 (866-7873251)



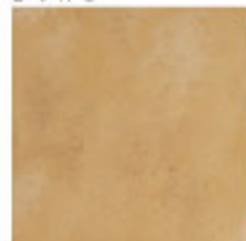
COLORS



White



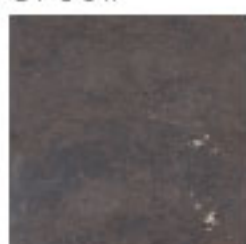
Bone



Gold



Green



Extra Brown



Black Onyx

SIZES

	12"x24" Polished	12"x24" Honed	18"x18" Polished	12"x12" Polished	12"x12" Honed
White	USP1224011	USH1224011	USP1818011	USP1212011	USH1212011
Bone	USP1224012	USH1224012	USP1818012	USP1212012	USH1212012
Gold	USP1224013	USH1224013		USP1212013	USH1212013
Green	USP1224014	USH1224014		USP1212014	USH1212014
Black Onyx	USP1224015	USH1224015	USP1818015	USP1212015	USH1212015
Extra Brown	USP1224017	USH1224017		USP1212017	USH1212017

*All sizes are nominal

TRIMS

	STAIR TREAD 12"x12" Honed	BULL NOSE 3"x12" Polished	BULL NOSE 3"x12" Honed	DBN-L 3"x12" Polished	DBN-L 3"x12" Honed	DBN-R 3"x12" Polished	DBN-R 3"x12" Honed
White	USH12ST011	USP312B011	USH312B011	USP312B611	USH312B611	USP312B311	USH312B311
Bone	USH12ST012	USP312B012	USH312B012	USP312B612	USH312B612	USP312B312	USH312B312
Gold	USH12ST013	USP312B013	USH312B013	USP312B613	USH312B613	USP312B313	USH312B313
Green	USH12ST014	USP312B014	USH312B014	USP312B614	USH312B614	USP312B314	USH312B314
Black Onyx	USH12ST015	USP312B015	USH312B015	USP312B615	USH312B615	USP312B315	USH312B315
Extra Brown	USH12ST017	USP312B017	USH312B017	USP312B617	USH312B617	USP312B317	USH312B317

MOSAICS

12"x12" mosaic 2"x2"

USH12M0011 WHITE	USH12M0012 BONE	USH12M0013 GOLD	USH12M0014 GREEN	USH12M0015 BLACK ONYX	USH12M0017 EXTRA BROWN

New Mosaic Design 2 12"x12"

USP1202011 WHITE POLISHED	USP1202012 BONE POLISHED	USP1202015 B. ONYX POLISHED
USH1202011 WHITE HONED	USH1202012 BONE HONED	USH1202015 B. ONYX HONED

New Mosaic Design 1 4"x12"

USP4120103 POLISHED	USH4120103 HONED

ACCENTS

USH212B202 BORDER1 2"x12"	USH112B501 BORDER2 1"x12"
USH200T202 DOT1 2"x2"	USH0612L01 STAINLESS STEEL 5/8"x12"

TUMBLLED TILES 3"x6"

USH36TU011 WHITE	USH36TU012 BONE	USH36TU013 GOLD
USH36TU014 GREEN	USH36TU015 BLACK ONYX	USH36TU017 EXTRA BROWN

PACKAGING INFORMATION

SIZE	PCS/ BOX	SF/ BOX	THICK mm.	WEIGHT lbs/sf
12"x24"	8	15.351	9.5	4.55
18"x18"	6	13.313	9.5	4.55
12"x12"	10	9.393	9.5	4.55
STAIR TREAD	10	9.393	9.5	4.55
			lb/piece	8.948
BULL NOSE/DBN-R/DBN-L	33			
BORDER 1	4			
BORDER 2	4			
DOT 1	3			
STAINLESS STEEL	6			
12"x12" MOSAIC 2"x2"	5			
NEW MOS.DES.1 4"x12"	6			
NEW MOS.DES.2 12"x12"	5			
TUMBLLED TILE 3"x6"	15			



MADE IN THE USA

*Printed color reproductions may vary from actual tile color
*For technical info refer to our web site www.stonepeakceramics.com