



1. PRODUCT NAME

Marble Collection – DS 110.00

2. MANUFACTURER

StonePeak Ceramics, Inc.
 314 West Superior
 Chicago, IL 60610
 Telephone: 312.506.2800
 Fax: 312.335.0533
 Email: info@stonepeakceramics.com
 Website: www.stonepeakceramics.com

3. PRODUCT DESCRIPTION

Marble – Six (6) beautiful colors that satisfy your senses like the look and feel of quarried marbles. **StonePeak Marble** features all the unique colorations of quarried marbles while delivering minimal veining. Like quarried marbles, no two StonePeak Marble slabs are alike. This collection of rectified through-body porcelain is completely modular.

Recommended Applications:
 Ideally suited for commercial and residential settings such as hotel lobbies, restaurants, shopping malls, airports, schools, and residential floors and walls.

Finishes/Textures:
 Polished and Honed Finishes; Rectified

Size/thickness:
 12" x 12" x 3/8" nominal *(9.5 mm)
 12" x 24" x 3/8" nominal *(9.5 mm)
 *denotes work size per ISO 10545-2

Recommended Grout Joint: 3/32" or greater
 All sizes modular with 3/16" grout joint (≈5 mm)

Grout joints of 1/8" inch or less, especially with larger format tiles or running bond patterns, may require floor flatness values in excess of the 1/4" in 10' (or 1/16" in 1.0') standard required by ANSI.

For patterns with running bond/brick joint patterns StonePeak recommends a maximum of 33% offset.

StonePeak Ceramics Trim System:
 A wide variety of bullnose and corner trims, mosaics decorative wall tiles, borders and accents are available for you to complete projects for total design aesthetics. Refer to **StonePeak Ceramics Product Catalogue**.

4. TECHNICAL DATA

Physical Properties	ASTM Test	Industry Standards	StonePeak Results
Water Absorption	C373	Impervious < 0.5%	≤ 0.1%
COF Average (honed)	C1028	No Requirement	≥ 0.80 Dry ≥ 0.60 Wet
Freeze Thaw Cycling	C1026	No Requirement	No Evidence Of Damage
Abrasive Hardness	C501	100	>250
Hardness (Mohs)		No Requirement	8
Warpage Average	C485	Warpage +/- 1% on any edge	0.03%
Warpage Average	C485	Warpage +/- 0.75% on diagonal	0.05%
Wedging Average	C502	Wedging +/- 1%	0.04%
Chemical Resistance	C650	No Requirement	Unaffected
Breaking Strength	C648	250 lbf or greater	> 500 lbf
Glazed Wear	C1027	No Requirement	NA
Aesthetic Class/Shade Rating		No Requirement	V2

COF: all values given are for matte or honed material. No values are given for polished material. StonePeak does not recommend polished surfaces in areas subject to exposure from grease, oil or water.

5. INSTALLATION

Surface Preparation:

All installation work using StonePeak Ceramics tiles will conform to the standards set forth in the latest version of ANSI A108/118 and/or the TCA Handbook for Ceramic Tile installations.

All substrates should be between 40 degrees F and 90 degrees F and structurally sound, clean and free of all dirt, oil, grease, paint, concrete sealers or curing compounds as per ANSI A108.01.

Deflection:

Substrate must conform to all state and local building code requirements and ANSI A108.01 for maximum allowable substrate deflection.

Movement Joints:

Movement joints shall be provided throughout the tile and work will conform to ANSI Specification A108.01-3.7; A108.02 – 4.4.and TCA Details EJ171.

Installation or setting materials:

Setting materials used will conform to the ANSI 118.4 standard or greater and be recommended by the selected manufacturer for the installation & setting materials for ceramic or porcelain tile based on the application requirements

6. AVAILABILITY AND COST

StonePeak Marble Collection is available from select distributors of ceramic tile and stone.

To find accessible information of delivery and product costs for your area, please contact your nearest StonePeak Ceramics representative.

See section 2 for available phone numbers and contact information.

7. WARRANTY

StonePeak Ceramics guarantees that its products will be free of manufacturing defects and they will meet or exceed the performance specifications set forth in ANSI 137.1.

For further information and details please contact your nearest StonePeak Ceramics Distributor or StonePeak Ceramics representative for a written copy of the warranty information.

See section 2 for available phone numbers and contact information.

8. MAINTENANCE

Care and Maintenance Recommendations Guide

Please refer to **StonePeak Ceramics Care and Maintenance Recommendations Guide** for all technical information as to the care of this collection.

9. TECHNICAL SERVICES

Technical Assistance

Guide Specifications, literature, MSDS, tile samples, details and installation procedures are all available for your use or libraries.

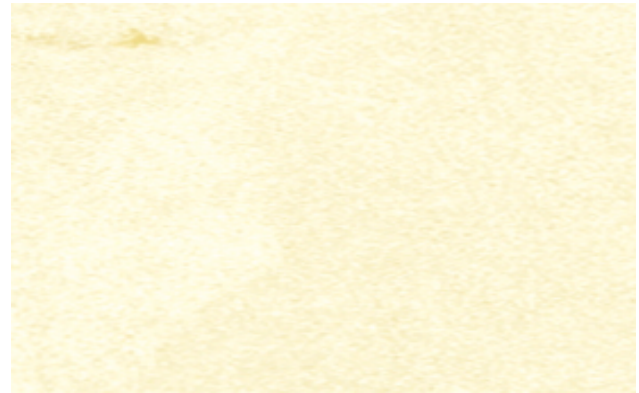
Please contact your nearest StonePeak representative for catalogues, physical samples,

architectural binders or StonePeak Architectural Resource CD-ROM.

Continued Education Programs are available – **1 or 2 hour HSW** Learning Units – contact StonePeak Ceramics' main office to set up a presentation.

10. FILING SYSTEMS

DS 110.00 – Marble Collection



White



Bone



Gold



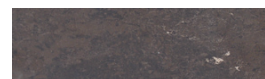
Green



Black Onyx



Extra Brown



Note to Specifier: Click on color with Internet Connection to hyperlink directly to product color data at the StonePeak Ceramics website.