



## 1. PRODUCT NAME

# FRENCH CLAY SELECT

## TECHNICAL DATA SHEET

## 2. MANUFACTURER

### Stonepeak Ceramics, Inc.

720 N. Franklin St., Ste 500, Chicago, IL 60654 US

### Production Factory:

238 Porcelain Tile Dr., Crossville, TN 38555 US

Telephone: 312.506.2800

Email: [info@stonepeakceramics.com](mailto:info@stonepeakceramics.com)

Website: [stonepeakceramics.com](http://stonepeakceramics.com)

## 3. PRODUCT DESCRIPTION

**French Clay Collection** – step into the timeless charm of the French countryside with French Clay. Inspired by the textures and aesthetics of traditional French dwellings, each material exudes a handcrafted allure, reminiscent of artisan craftsmanship passed down through generations. The collection’s range of neutral nuances evokes a sense of antique enchantment, transforming any space into a haven of elegance and history.

### Recommended Applications:

Ideally suited for commercial and residential floors and walls.

### Finishes/Textures:

- Color Body
- Rectified
- Matte

### Sizes/Thickness:

12" x 24" x 5/16" nominal \*(8 mm)

*\*Denotes work size per ISO 10545-2.*

### Recommended Grout Joint: 3/32" or greater.

Grout joints of 1/8" inch or less, especially with larger format tiles or running bond patterns, may require floor flatness values in excess of the 1/4" in 10' (or 1/16" in 1.0') standard required by ANSI. For patterns with running bond/brick joints, Stonepeak recommends a maximum of 33% offset.

## Stonepeak Ceramics Trim System

A variety of bullnose, cove base and mosaic tiles are available for complete design aesthetics.

Refer to **Stonepeak Ceramics Product Catalog**.

## 4. TECHNICAL DATA

Physical Properties	ASTM Test	Industry Standards	Stonepeak Results <sup>(1)</sup>
Water Absorption	C373	Impervious < 0.5 %	< 0.1%
Thickness Dimension	C499	Range ≤ 0.04 Inc. Max	≤ 0.04 Inch
Facial Dimension	C499	± 0.25%	≤ ± 0.25%
Warpage Average Diagonal	C485	Range - 0.30% / + 0.40%	≤ ± 0.40%
Warpage Average Edge	C485	Range - 0.30% / + 0.40%	≤ ± 0.40%
Wedging	C502	± 0.25%	≤ ± 0.25%
Bond Strength	C482	≥ 50 psi	≥ 50 psi
Breaking Strength	C648	≥ 275 lbf	≥ 275 lbf
Hardness (Mohs)	C1895	Range 0 - 10	≥ 7
Visible Abrasion Resistance for Glazed tiles	C1027	No Requirement; Range 0 - 5	Class III
Frost Resistance	C1026	No sample must show alterations to surface	No evidence of Damage
Chemical Resistance	C650	No Requirement; Range E - A	Class A / Unaffected
Stain Resistance	C1378	No Requirement; Range E - A	Class A
DCOF (Matte/Honed)	ANSI A 326.3	≥ 0.42	≥ 0.52 <sup>(2)</sup>
Aesthetic Class/Shade Rating	Visual Evaluation Shade & Texture	No Requirement; Range VO - V4	V2

(1) All values given are for Matte/Honed finish. Values for different finishes are available upon request.

(2) DCOF results referring to Matte products are performed with the WET test, while for polished and silky the DCOF test is performed dry.

(3) Glazed tiles.

## 5. INSTALLATION

### Surface preparations:

All installation work using Stonepeak Ceramics' tiles will conform to the standards set forth in the latest version of ANSI A108/118 and/or the TCNA Handbook for Ceramic Tile installations.

All substrates should be between 40 degrees F and 90 degrees F and structurally sound, clean and free of all dirt, oil, grease, paint, concrete sealers or curing compounds as per ANSI A108.01.

**Deflection:**

Substrate must conform to all state and local building code requirements and ANSI A108.01 for maximum allowable substrate deflection

**Movement joints:**

Movement joints shall be provided throughout the tile and work will conform to ANSI Specification A108.01-3.7; A108.02 – 4.4.and TCNA Details EJ171.

**Installation or setting materials:**

Setting materials used will conform to the ANSI 118.4 standard or greater and be recommended by the selected manufacturer for the installation & setting materials for ceramic or porcelain tile based on the application requirements.

**6. AVAILABILITY AND COST**

**French Clay Collection** is available from selected distributors of ceramic tile.

To find accessible information of delivery and product costs for your area, please contact your nearest Stonepeak Ceramics distributor.

**See our website the find a distributor near you:**  
<http://www.stonepeakceramics.com/services-where-to-buy.php>

**7. WARRANTY**

**Stonepeak Ceramics** guarantees that its products will be free of manufacturing defects and they will meet or exceed the performance specifications set forth in ANSI 137.1.

For further information and details please contact your nearest Stonepeak Ceramics Distributor for a written copy of the warranty information.

**For distributor information go to our website:**  
<http://www.stonepeakceramics.com/services-where-to-buy.php>

**8. MAINTENANCE****Care and Maintenance Recommendations Guide.**

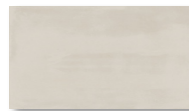
Please refer to **Stonepeak Ceramics Care and Maintenance Recommendations Guide** for all technical information as to the care of this collection.

**9. TECHNICAL SERVICES****Technical Assistance**

Guide Specifications, literature, SDS, tile samples, details and installation procedures are all available for your use or libraries.

Please contact your nearest Stonepeak representative for catalogues or physical samples.

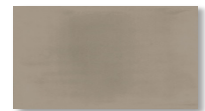
**Continued Education Programs** are available – 1- or 2-hour **HSW Learning Units** – contact Stonepeak Ceramics' main office to set up a presentation.

**10. FILING SYSTEMS****French Clay Collection**

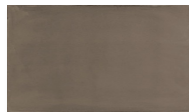
Lumiere



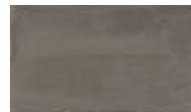
Fume



Bronzage



Café



Sombre

**11. ENVIRONMENTAL CERTIFICATIONS**

Stonepeak proudly contain factory and product certifications:

**12. RECYCLED CONTENT**

Products certified by Bureau Veritas. Please ask to see certifications.