

## BALANCE (6MM)

Porcelain tile classified as Impervious Group P1 is frost-resistant and chemically resistant. These characteristics are achieved through the dry-forming of high-quality mixtures composed of atomized and blended natural raw materials, such as kaolin minerals and feldspars.

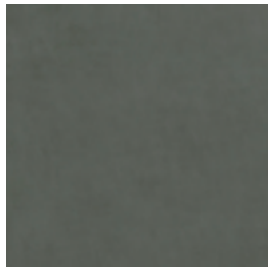
### Collection Description

Company	Stonepeak Ceramics
Collection	Balance (8MM)
Finishes	Natural Plus
Glazed/Unglazed	Glazed
Thickness in inch	15/64 in
Thickness in mm	6mm
Rectified	Yes

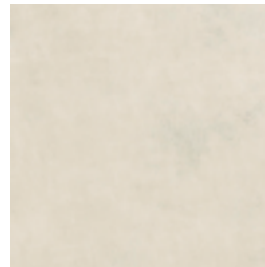
### Available Colors



Azure



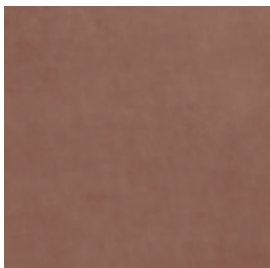
Chester Green



Ivory



Light Grey



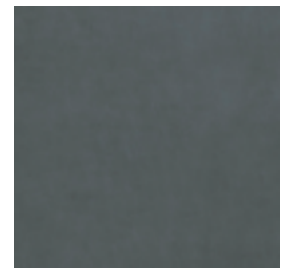
Marsala Red



Nude



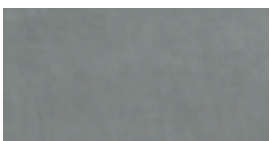
Ochre



Steel Blue

### Nominal Sizes

#### Tile



106"x48"

## BALANCE (6MM)

### Product Dimensions (Rectified)

Nominal Size (in)	Actual (in)	Nominal Size (cm)	Actual (mm)
48 x 106 in	106.3 x 47.24 in	270 x 120 cm	2700 x 1200.00 mm

For more information about this collection scan below



### Technical Features

Physical Properties	Norms	Required Standards	Stonepeak Results <sup>(1)</sup>
Water Absorption	ASTM C 373 - 18	Impervious ≤0.5%	≤0.5%
Thickness Variation	ASTM C 499 - 20	± 0.02 inch	± 0.02 inch
Facial Dimension	ASTM C 499 - 20	± 0.25 %	± 0.25 %
Wedging	ASTM C 502 - 16	± 0.25 %	± 0.25 %
Dry Bond Strength	ASTM C 482 - 20	≥ 50 psi	≥ 150 psi
Breaking Strength	ASTM C 648 - 20	≥ 275 lbf	≥ 175 lbf
Modulus of Rupture	ASTM C 1505 - 20	≥ 6000 psi	≥ 6000 psi
Hardness (Mohs)	ASTM C 1895 - 20	Range 0 - 10	≥ 7 <sup>(2)</sup>
Deep Abrasion	ASTM C 1243 - 93 (2015)	Impervious ≤175mm <sup>3</sup> (0.011in <sup>3</sup> )	140 mm <sup>3</sup>
Frost Resistance	ASTM C 1026 - 13 (2018)	No sample must show alterations to surface	No evidence of damage
Chemical Resistance	ASTM C 650 - 20	Range A / E	Class A <sup>(3)</sup>
Stain Resistance	ASTM C 1378 - 20	Range A / E	Class A <sup>(3)</sup>
Fire Resistance	ASTM E84	Class A	Class A1-A1FL

### Result Notes

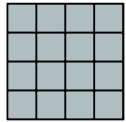
- (1) All values given are for textured/natural/structured finish. Values for different finishes are available upon request.
- (2) Mohs result referring to textured/natural finish. For polished/semi-polished/silky finish: ≥ 6.
- (3) Chemical and stain resistance refer to textured/natural finish. For polished/silky finish tests are provided on request. For more detailed information, refer to ANSI A137.1 Specifications for Ceramic Tile.

# BALANCE (6MM)

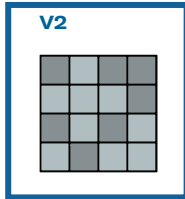
## Technical Features: Visual Evaluation Shade & Texture

### Visual Evaluation

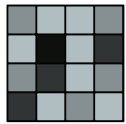
V1



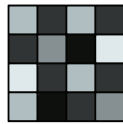
V2



V3



V4



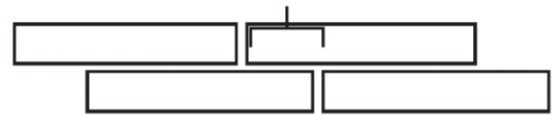
TCNA rates tile color and texture variation on a scale up to V4, with V4 indicating the highest variation.

**This porcelain tile is rated V2, meaning moderate variation in tone, primarily consistent with slight differences between tiles.**

### Recommended Grout Joint

Recommended grout joint is 3/16" or greater.

Grout joints of 1/8" inch or less, especially with larger format tiles or running bond patterns, may require floor flatness values in excess of the 1/4" in 10' (or 1/16" in 1.0') standard required by ANSI.



For patterns with running bond/brick joints, Stonepeak recommends a maximum of 33% offset.

## Technical Features: Recommended Use

Visible Abrasion Resistance ratings are based on ASTM C1027-19 testing, which measures surface wear under abrasive load, combined with our manufacturer-declared results.

**Visible Abrasion Resistance data for this collection is available upon request.**

### Class 1

Residential Bathrooms

### Class 2

All Residential Areas

### Class 3

All Residential / Light Commercial

### Class 4

All Residential / Commercial

## Pre-Consumer Recycled Content

This porcelain product, manufactured at the Crossville, TN factory, contains at least **40% pre-consumer recycled content**, with all claims certified by Bureau Veritas Certification. Recycled content is a LEED metric intended to increase demand for building materials that incorporate reused or repurposed materials.



ISO 14021:2021 CONTENT OF RECYCLED MATERIAL  
Rev.15 \_ Issued 7.31.2024 Expired 9.03.2027

## BALANCE (6MM)

### Technical Features: DCOF - Wet Test

Norm	Standard	Stonepeak Result <sup>(4)</sup>
ANSI A 326.3 - 2021	≥0.42	≥0.55 + Natural Plus

### Product Use Recommendation

Finish	Classification	Criteria
Natural, Polished	Interior Dry (ID)	≥ 0.42 dry DCOF
Natural	Interior Wet (IW)	≥ 0.42 wet DCOF

More information can be found at: (<https://tcnatile.com/resource-center/dynamic-coefficient-of-friction/>)

### Result Notes

- (4) DCOF results referring to textured/natural/structured products are performed with the WET test, while for polished, semi-polished and silky the DCOF test is performed DRY.
- (4) The DCOF values shown in the catalog, website, or other sales documents are for reference only and are non-binding. Any specific requirements must be confirmed by us at the time of order and, in any case, always prior to installation.
- (4) All values given are for textured/natural/structured finish.

### Certifications, Memberships and Validations

#### Product Certifications and Validations



放射性水平A类

#### Organizational Memberships & Other Validations



#### More information

For more information regarding Product Care and Maintenance, Warranty and other technical documents refer to our Stonepeak Document Library: ([www.stonepeakceramics.com/document-library/](http://www.stonepeakceramics.com/document-library/)).

For more information scan below



**MADE IN ITALY**

**Stonepeak Ceramics, Inc.**  
Corporate Headquarters  
720 N Franklin St., Ste 500  
Chicago, IL 60654 US

**Production Plant**  
238 Porcelain Tile Dr.  
Crossville, TN 38555 US

The technical data reported in this Technical Data Sheet are indicative and non-binding. The company reserves the right to make changes at any time without prior notice. Always refer to the latest available version of this document.