



PLANE 2.0

STONEPEAK

high tech porcelain



Plane 2.0 is a winning mixture of style and innovation that allows for maximum design freedom. The collection creates an individual look for both commercial and residential settings.

StonePeak Ceramics, Inc.
Corporate Headquarters
314 West Superior Street
Chicago, Illinois 60654

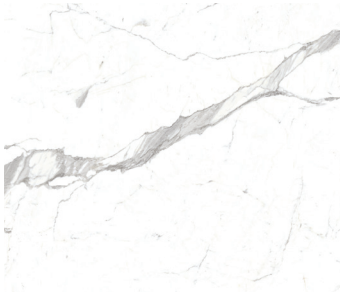
SAMPLEXPRESS
866-STPEAK1
866-7873251

Production Facility
238 Porcelain Tile Drive
Crossville, TN 38555

www.stonepeakceramics.com
info@stonepeakceramics.com



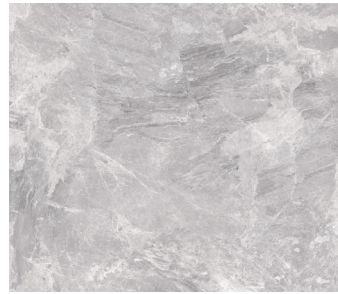
COLORS



Statuarietto



Calacatta Oro



Bardiglietto



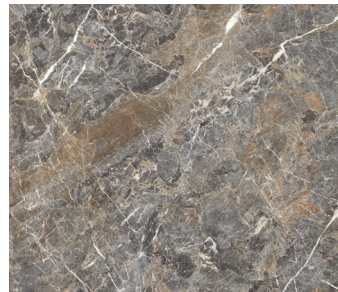
Bianco Carrara



Cremino



Avalanche



Saint Laurent Dark



Saint Laurent Light



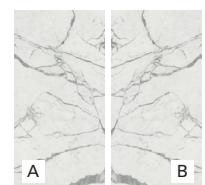
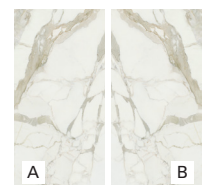
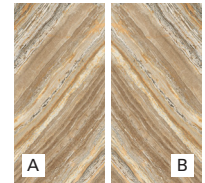
Imperial White



Imperial Ginger



Cobra



Travertino Vein Cut



Calacatta Royale



Statuario Vero

*Cobra, Calacatta Royale, Statuario Vero available in bookmatch.

SIZES

