

Stonepeak Ceramics, Inc.
Corporate Headquarters
720 N Franklin St., Ste 500
Chicago, IL 60654 US

Production Plant
238 Porcelain Tile Dr.
Crossville, TN 38555 US

SPECIFICATIONS of collection: MYSTÈRE

Supply of porcelain stoneware Stonepeak Ceramics.

1. Product and Process Features

Porcelain stoneware slabs, classified as Impervious Group P1, are frost-resistant and chemically resistant. These characteristics are achieved through the dry-forming of high-quality mixtures composed of atomized and blended natural raw materials such as kaolin minerals and feldspars.

The slabs are MADE IN THE U.S.A. and gain their mechanical strength through a sintering process conducted at extremely high temperatures.

2. Compliance with Standards

The material, in compliance with the requirements of American standards ANSI A 137.1: June 2021, ANSI A326.3-2021 and ASTM Section 15 Volume 15.02, must meet the following technical features:

ASTM C373 – 18 (Water absorption)
ASTM C499 – 20 (Facial dimension and Thickness)
ASTM C485 – 16 (Warpage)
ASTM C502 – 16 (Wedging)
ASTM C482 – 20 (Bond Strength)
ASTM C648 – 20 (Breaking Strength)
ASTM C1895 – 20 (Hardness - Mohs)
ASTM C1027 – 19 (Visible Abrasion Resistance)
ASTM C1026 – 13 (Frost Resistance)
ASTM C650 – 20 (Chemical Resistance)
ASTM C1378 – 20 (Stain Resistance)
ANSI A 326.3 – 2021 (DCOF).

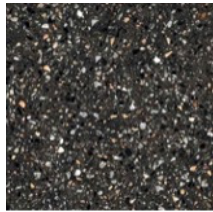
The Quality Control System implemented by the company guarantees the mentioned above features in accordance with UNI-EN-ISO 9001:2015 standards.

The slabs have been checked and evaluated by an independent third-party Body which certifies their compliance to the LEED_BREEAM.

3. Collection Description

Company	Stonepeak Ceramics Inc.
Collection	Mystère
Color	Black – Blue – Brown – Dark Grey – Green – Light Grey – Linen – Sand – White
Finish	Semi-polished & Structured
Glazed / Unglazed	Glazed
Rectified / Unrectified	Rectified
Size in inch	24x48 – 24x24 – 12x24 – 4x24 (bullnose trim) – 1x12 (mosaic on 12x12 mesh sheet)
Size in cm	60x120 – 60x60 – 30x60 – 10x60 (bullnose trim)
Thickness in inch	5/16
Thickness in mm	8mm

Available Colors



Black



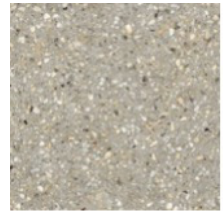
Blue



Green



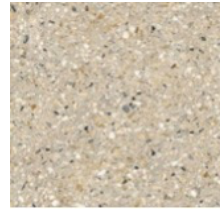
Dark Grey



Light Grey



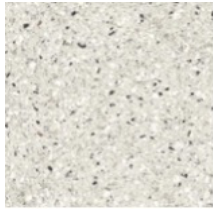
Linen



Sand



Brown



White

Product Dimensions

Materials supplied in Mono-caliber (Caliber 7).

Nominal size in Inch	Actual size in Inch	Nominal size in cm	Actual size in mm
24 x 48	23.70 x 47.40	60 x 120	602.00 x 1204.00
24 x 24	23.70 x 23.70	60 x 60	602.00 x 602.00
12 x 24	11.73 x 23.70	30 x 60	298.00 x 602.00
4 x 24	3.76 x 23.70	10 x 60	95.5 x 602

For more information about this collection refer to Stonepeak Ceramics product webpage:
<https://www.stonepeakceramics.com/mystere/>

4. Technical Features

I. Technical Features: Product Performance

Physical Properties	Norms	Required Standards	Stonepeak Results ⁽¹⁾
Water Absorption	ASTM C 373 - 18	Impervious ≤ 0.5 %	≤ 0.5 %
Thickness Variation	ASTM C 499 - 20	0.04 inch	0.04 inch
Facial Dimension		± 0.25 %	± 0.25 %
Warpage Average Diagonal	ASTM C 485 - 16	± 0.40 %	± 0.40 %
Warpage Average Edge		± 0.40 %	± 0.40 %
Wedging	ASTM C 502 - 16	± 0.25 %	± 0.25 %
Bond Strength	ASTM C 482 - 20	≥ 50 psi	≥ 50 psi
Breaking Strength	ASTM C 648 - 20	≥ 275 lbf	≥ 275 lbf
Hardness (Mohs)	ASTM C 1895 - 20	Range 0 - 10	≥ 7 ⁽²⁾
Frost Resistance	ASTM C 1026 - 13 (2018)	No sample must show alterations to surface	No evidence of damage
Chemical Resistance	ASTM C 650 - 20	Range A / E	Class A ⁽³⁾
Stain Resistance	ASTM C 1378 - 20	Range A / E	Class A ⁽³⁾

Result Notes:

(1) All values given are for textured/natural/structured finish. Values for different finishes are available upon request.

(2) Mohs result referring to textured/natural finish. For polished/semi-polished/silky finish: ≥ 6 .

(3) Chemical and stain resistance are referring to textured/natural finish. For polished/silky finish, tests are provided on request. For more detailed information, refer to ANSI A137.1 Specifications for Ceramic Tile.

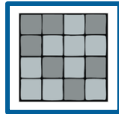
II. Technical Features: Visual Evaluation Shade & Texture

TCNA uses a V0-V4 rating system to classify the expected variation in color and texture of tiles. This porcelain tile has a V2 variation, meaning color and texture are consistent in tone but may vary in amount from piece to piece.

V1



V2



V3



V4



Recommended Grout Joint

Recommended grout joint is 3/32" or greater.

Grout joints of 1/8" inch or less, especially with larger format tiles or running bond patterns, may require floor flatness values in excess of the 1/4" in 10' (or 1/16" in 1.0') standard required by ANSI.

For patterns with running bond/brick joints, Stonepeak recommends a maximum of 33% offset.

III. Technical Features: Recommended Use

Visible Abrasion Resistance ASTM C1027 - 19 test method measures the visible surface abrasion resistance of tile by rotating an abrasive load on the surface and visually comparing worn areas to unworn samples.

Class 0: Not Recommended for Floors	Class 1: Light Residential	Class 2: Residential	Class 3: Light Commercial	Class 4: Commercial	Class 5: Heavy Commercial
			Blue, Black, Green	All other Colors	

5. Technical Features: American National Standard ANSI A326.3

The American National Standard A326.3 describes the test method for measuring dynamic coefficient of friction (DCOF) of hard surface flooring materials in the laboratory and in the field. The standard also includes DCOF specifications, product use classifications and guidance on defining hard surface flooring materials. This standard serves as a guide to the general public, manufacturers, distributors, specifiers, architects, contractors, testing laboratories, building owners, businesses and other professionals.

I. *Dynamic Coefficient of Friction (DCOF):

The Dynamic Coefficient of Friction (DCOF) is the ratio of the force necessary to keep a surface in motion sliding over another surface, divided by the weight (or normal force) of the sliding object. Different contaminants such as dirt, water, soap, oil, or grease can change this value.

More information can be found at: (<https://tcnatile.com/resource-center/dynamic-coefficient-of-friction/>)

I. **Manufacturer-Declared (Section 3.4 of ANSI 326.6):

Manufacturer shall declare product use classification based on manufacturing parameters, internal quality control criteria, their experience with similar surfaces, and the criteria in this standard for all surfaces classified under Sections 4.1.3, 4.1.4, and 4.1.5, mosaic surfaces, and flooring where surface structure (e.g. three-dimensionally patterned or profiled surfaces) results in misleading DCOF measurements due to test device constraints.

For more information regarding Manufacturer Declared view Section 3.4 of the ANSI A326.3.

II. Product Use Classification

Classification	Reference Category	Criteria
Interior, Dry	ID	≥ 0.42 dry DCOF* (per Section 10.1) or Manufacturer Declared**
Interior, Wet	IW	≥ 0.42 wet DCOF* (per Section 9.1) or Manufacturer Declared**
Exterior, Wet Plus	IW+	Manufacturer Declared**
Exterior, Wet	EW	Manufacturer Declared**
Oils/Greases	O/G	Manufacturer Declared**

III. Testing Results:

Product Performance	Norms	Required Standards	Stonepeak Recommendations ⁽⁴⁾
DCOF Testing or Manufacturer Declared	ANSI A 326.3 - 2021	DCOF ≥ 0.42	ID & IW

⁽⁴⁾Results Notes:

- DCOF results referring to textured/natural/structured products are performed with the WET test, while for polished, semi-polished and silky the DCOF test is performed DRY.
- The values of DCOF shown in the catalog, website or sales documents in general, are merely indicative and non-binding. Any possible specific requirement must be confirmed by us at the order and anyway always before the installation.

6. Certifications, Memberships and Validations

I. Product Certifications and Validations



Verification/validation opinion IT336282 of 10/07/2024 relating to the GHG inventory, issued by Bureau Veritas Italia S.p.A. for the calendar year 2023.



II. Organizational Memberships



III. Other Validations



For more information about our sustainability efforts refer to Stonepeak Ceramics Sustainability webpage: <https://www.stonepeakceramics.com/sustainability/>

IV. More Information:

For more information regarding Product Care and Maintenance, Warranty and other technical documents refer to our Stonepeak Document Library (<https://www.stonepeakceramics.com/document-library/>)