

## MYSTÈRE

Porcelain tile classified as Impervious Group P1 is frost-resistant and chemically resistant. These characteristics are achieved through the dry-forming of high-quality mixtures composed of atomized and blended natural raw materials, such as kaolin minerals and feldspars.

### Collection Description

Company	Stonepeak Ceramics
Collection	Mystère
Finish	Semi-Polished & Structured
Glazed/Unglazed	Glazed
Thickness in inch	5/16 in
Thickness in mm	8mm
Rectified	Yes

### Available Colors



White



Linen



Sand



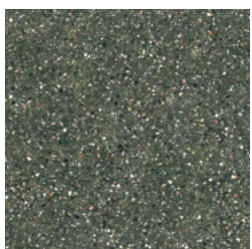
Brown



Light Grey



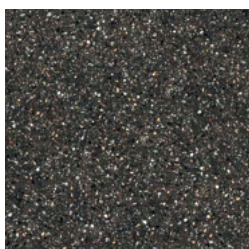
Dark Grey



Green



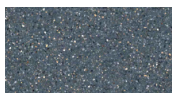
Blue



Black

### Nominal Sizes

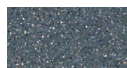
#### Field Tile



24"x48"



24"x24"



12"x24"

#### Mosaic and Trim\*



1"x12" Mosaic



4"x24" Bullnose

(\*) Special pieces are intended as complementary items for finishing purposes and are adaptable to any caliber. Variations in shade and graphic appearance compared to the main field tile should be considered standard.

# MYSTÈRE

## Product Dimensions (Rectified)

Nominal Size (in)	Actual (in)	Nominal Size (cm)	Actual (mm)
24 x 48 in	23.70 x 47.40 in	60 x 120cm	602.00 x 1204.00mm
24 x 24 in	23.70 x 23.70 in	60 x 60cm	602.00 x 602.00mm
12 x 24 in	11.73 x 23.70 in	30 x 60cm	298.00 x 602.00mm

For more information  
about this collection  
scan below



## Technical Features

Physical Properties	Norms	Required Standards	Stonepeak Results <sup>(1)</sup>
Water Absorption	ASTM C 373 - 18	Impervious $\leq 0.5\%$	$\leq 0.5\%$
Thickness Variation	ASTM C 499 - 20	$\pm 0.04$ inch	$\pm 0.04$ inch
Facial Dimension	ASTM C 499 - 20	$\pm 0.25$ %	$\pm 0.25$ %
Warpage Average Diagonal	ASTM C 485 - 16	$\pm 0.40$ %	$\pm 0.40$ %
Warpage Average Edge	ASTM C 485 - 16	$\pm 0.40$ %	$\pm 0.40$ %
Wedging	ASTM C 502 - 16	$\pm 0.25$ %	$\pm 0.25$ %
Bond Strength	ASTM C 482 - 20	$\geq 50$ psi	$\geq 50$ psi
Breaking Strength	ASTM C 648 - 20	$\geq 275$ lbf	$\geq 275$ lbf
Hardness (Mohs)	ASTM C 1895 - 20	Range 0 - 10	$\geq 7$ <sup>(2)</sup>
Frost Resistance	ASTM C 1026 - 13 (2018)	No sample must show alterations to surface	No evidence of damage
Chemical Resistance	ASTM C 650 - 20	Range A / E	Class A <sup>(3)</sup>
Stain Resistance	ASTM C 1378 - 20	Range A / E	Class A <sup>(3)</sup>
Fire Resistance	ASTM E84	Class A	Class A1-A1FL

## Result Notes

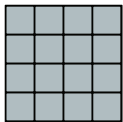
- (1) All values given are for textured/natural/structured finish. Values for different finishes are available upon request.
- (2) Mohs result referring to textured/natural finish. For polished/semi-polished/silky finish:  $\geq 6$ .
- (3) Chemical and stain resistance refer to textured/natural finish. For polished/silky finish tests are provided on request. For more detailed information, refer to ANSI A137.1 Specifications for Ceramic Tile.

# MYSTÈRE

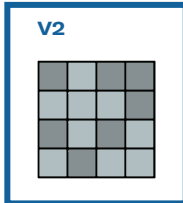
## Technical Features: Visual Evaluation Shade & Texture

### Visual Evaluation

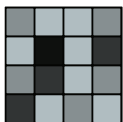
V1



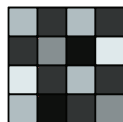
V2



V3



V4



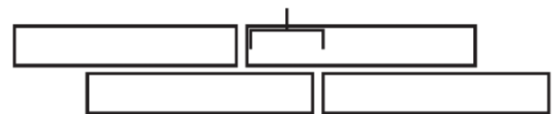
TCNA rates tile color and texture variation on a scale up to V4, with V4 indicating the highest variation.

**This porcelain tile is rated V2, meaning moderate variation in tone, primarily consistent with slight differences between tiles.**

### Recommended Grout Joint

Recommended grout joint is 3/16" or greater.

Grout joints of 1/8" inch or less, especially with larger format tiles or running bond patterns, may require floor flatness values in excess of the 1/4" in 10' (or 1/16" in 1.0') standard required by ANSI.



For patterns with running bond/brick joints, Stonepeak recommends a maximum of 33% offset.

## Technical Features: Recommended Use

Visible Abrasion Resistance ratings are based on ASTM C1027-19 testing, which measures surface wear under abrasive load, combined with our manufacturer-declared results.

Class 1	Class 2	Class 3	Class 4
Residential Bathrooms	All Residential Areas	All Residential / Light Commerical	All Residential / Commerical
		Blue, Black, Green	All other Colors

## Pre-Consumer Recycled Content

This porcelain product, manufactured at the Crossville, TN factory, contains at least **40% pre-consumer recycled content**, with all claims certified by Bureau Veritas Certification. Recycled content is a LEED metric intended to increase demand for building materials that incorporate reused or repurposed materials.



# MYSTÈRE

## Technical Features: DCOF - Wet Test

Norm	Standard	Stonepeak Result <sup>(4)</sup>
ANSI A 326.3 - 2021	≥0.42	≥0.42 + Structured

## Product Use Recommendation

Finish	Classification	Criteria
Structured, Semi-Polished	Interior Dry (ID)	≥ 0.42 dry DCOF
Structured	Interior Wet (IW)	≥ 0.42 wet DCOF

More information can be found at: (<https://tcnatile.com/resource-center/dynamic-coefficient-of-friction/>)

## Result Notes

- (4) DCOF results referring to textured/natural/structured products are performed with the WET test, while for polished, semi-polished and silky the DCOF test is performed DRY.
- (4) The DCOF values shown in the catalog, website, or other sales documents are for reference only and are non-binding. Any specific requirements must be confirmed by us at the time of order and, in any case, always prior to installation.
- (4) All values given are for textured/natural/structured finish. Values for different finishes are available upon request.

## Certifications, Memberships and Validations

### Product Certifications and Validations



放射性水平A类

### Organizational Memberships & Other Validations



## More information

For more information regarding Product Care and Maintenance, Warranty and other technical documents refer to our Stonepeak Document Library: ([www.stonepeakceramics.com/document-library/](http://www.stonepeakceramics.com/document-library/)).

For more information scan below



**Stonepeak Ceramics, Inc.**  
Corporate Headquarters  
720 N Franklin St., Ste 500  
Chicago, IL 60654 US

**Production Plant**  
238 Porcelain Tile Dr.  
Crossville, TN 38555 US

The technical data reported in this Technical Data Sheet are indicative and non-binding. The company reserves the right to make changes at any time without prior notice. Always refer to the latest available version of this document.